

Key

## 10-2 More Writing Linear Equations

Write an equation in slope-intercept form for each line.

1. Passes through  $(-5, 6)$ , slope = 3

$$y = 3x + 21$$

2. Passes through  $(-5, 6)$ , slope = 5

Write the equation of the line in slope-intercept form that passes through the following points.

3.  $(-1, 2)$  and  $(-2, 1)$

$$y = x + 3$$

4.  $(0, 7)$  and  $(-4, 1)$

5.  $(0, -12)$  and  $(-6, -2)$

$$y = -\frac{5}{3}x - 12$$

6.  $(1, -3)$  and  $(0, 0)$

7.  $(1, -4)$  and  $(3, -4)$

$$y = -4$$

8.  $(1, 1)$  and  $(1, 7)$

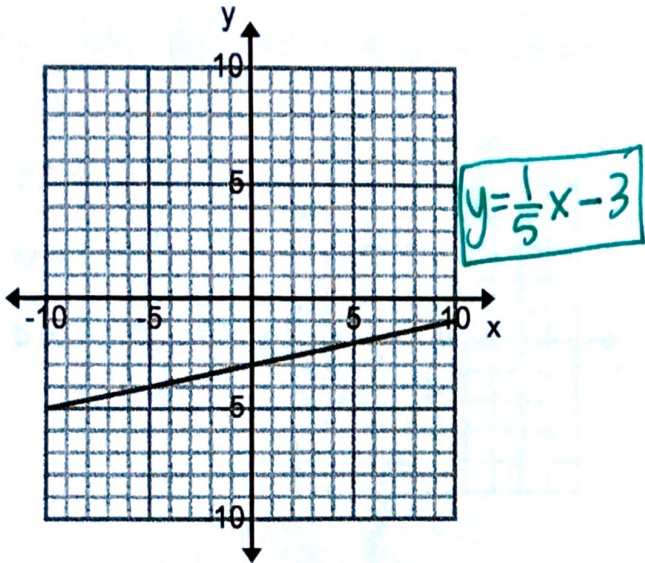
9.  $(-2, -3)$  and  $(-2, 5)$

$$x = -2$$

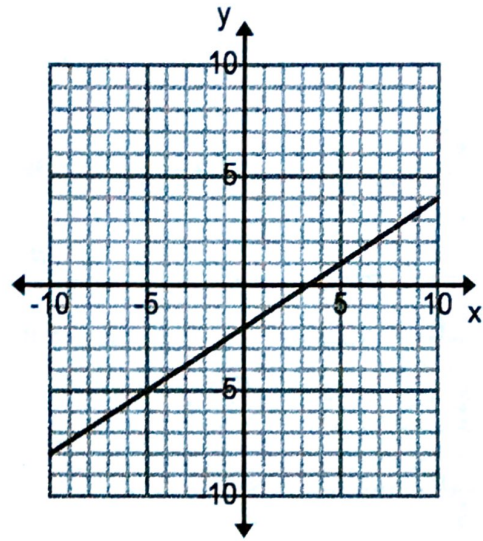
10.  $(1, 2)$  and  $(-4, -3)$

Write the equation of the graphed line in slope-intercept form.

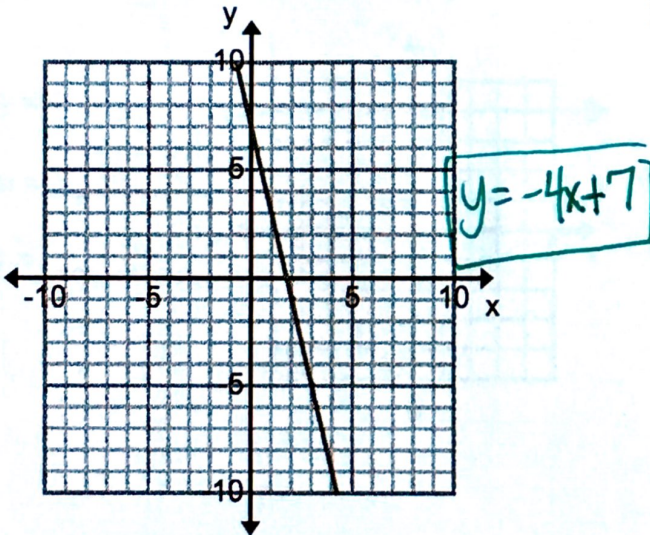
11.



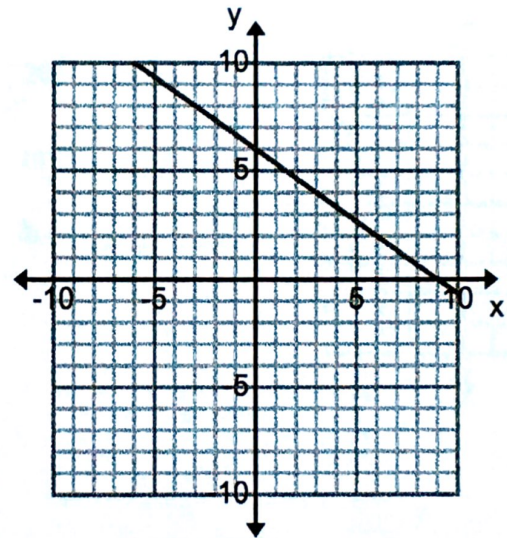
12.



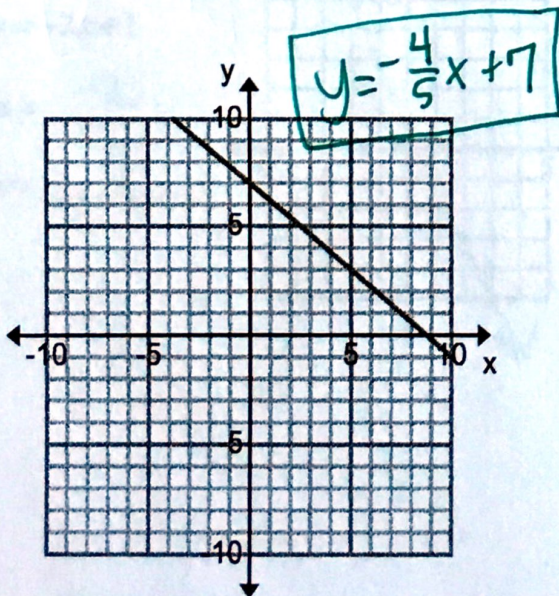
13.



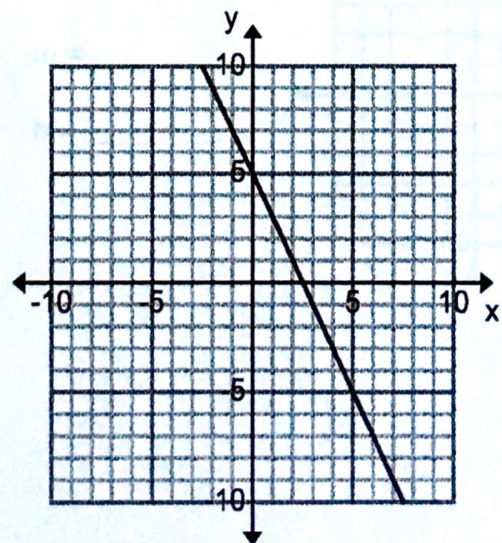
14.



15.



16.

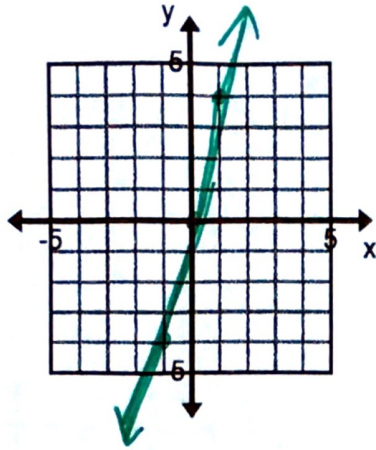


Identify the slope (m), y-intercept (b) and then graph the equation.

17.  $y = 4x$

$m = \underline{4}$

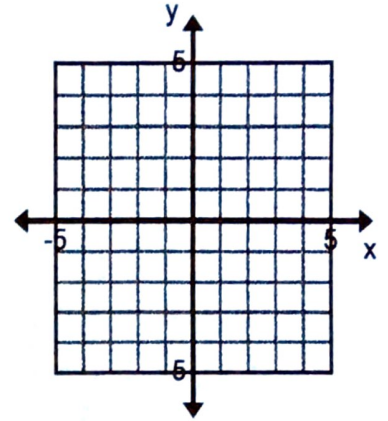
$b = \underline{0}$



18.  $x = -3$

$m = \underline{\hspace{2cm}}$

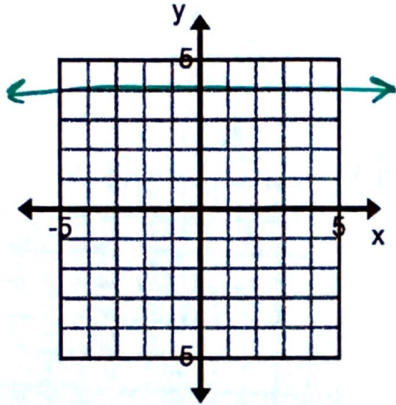
$b = \underline{\hspace{2cm}}$



19.  $y = 4$

$m = \underline{0}$

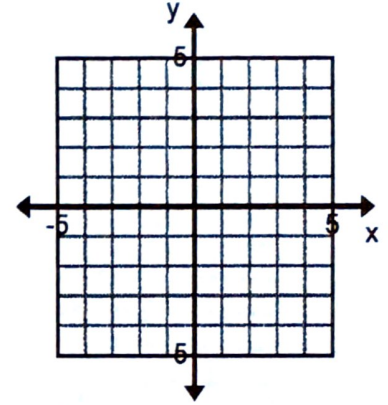
$b = \underline{4}$



20.  $y = -2x$

$m = \underline{\hspace{2cm}}$

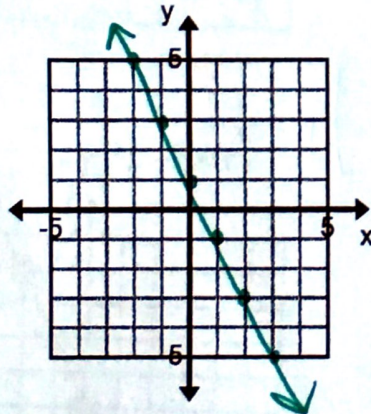
$b = \underline{\hspace{2cm}}$



21.  $y = -2x + 1$

$m = \underline{-2}$

$b = \underline{1}$



22.  $y = -x$

$m = \underline{\hspace{2cm}}$

$b = \underline{\hspace{2cm}}$

