

Name:

Period:

### Notes 1-2

Int 1

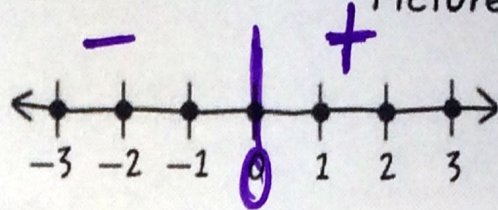
## Integers and Absolute Value

Unit 1

Describe It

A positive OR negative WHOLE number

Picture It



integer

List Some Examples

3    -1    25  
7    800    50,250  
          -100

List Some NonExamples

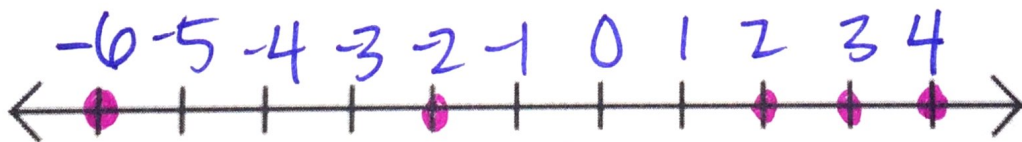
$3\frac{1}{4}$     3.258  
 $-4\frac{7}{8}$   
 $-5\frac{1}{4}$

Write an integer for each real-world situation.

- In a football game, the Mighty Lions had a loss of 11 yards. -11
- In the Amazon, the average rainfall for 2013 was 5 inches above normal. 5
- Angela made a deposit of \$16 in her bank account. 16    withdraw
- The temperature on January 12<sup>th</sup> 2008 was 6° F. 6

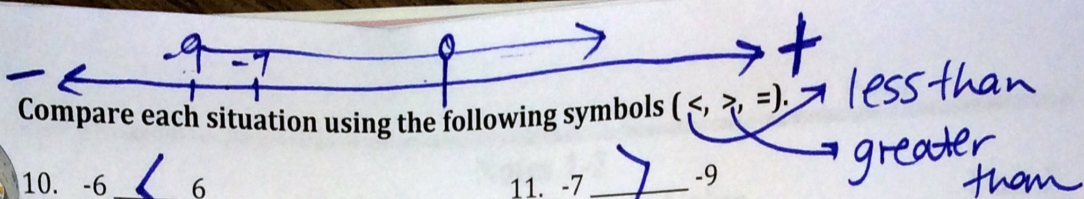
Place the following numbers on a number line.

5. -6                  6. 4                  7. -2                  8. 3                  9. 2



steps

- Find the BIGGEST negative number & put it at the left
- count & number the rest
- put dots



Compare each situation using the following symbols ( $<$ ,  $>$ ,  $=$ ).

10.  $-6 < 6$

11.  $-7 > -9$

12.  $-11 < 5$

13.  $8 > 7$

Place the following integers in order from least to greatest.

14. ~~{-2, 8, -7}~~ -7, -2, 8

15. ~~{-4, 10, -3, 7}~~ -4, -3, 7, 10

16.  $\{-2, 1, -1, 2\}$  \_\_\_\_\_, \_\_\_\_\_, \_\_\_\_\_, \_\_\_\_\_

17.  $\{2, -5, 7\}$  \_\_\_\_\_, \_\_\_\_\_, \_\_\_\_\_

What does it mean to find the absolute value of a number? How far away is the number from 0.

Evaluate each absolute value expression.

18.  $|-7| = 7$

19.  $|7| = 7$

20.  $|-9| + 3 = 12$   
 $9 + 3 \uparrow$

21.  $|6| + 2 = \underline{\hspace{2cm}}$

22.  $|11 - 4| = \underline{\hspace{2cm}}$

23.  $|-5| - |2| = 3$   
 $5 - 2$

24.  $|8 + 7| = \underline{\hspace{2cm}}$

25.  $15 - |9 - 2| = \underline{\hspace{2cm}}$

26.  $18 + |6 \cdot 4 - 3| = 39$   
 $18 + |24 - 3|$   
 $18 + |21|$   
 $18 + 21$