

## HW 7-2A

## Int 1

## Constant Rate of Change

## Unit 7

Determine whether the following tables represent a constant rate of change or not. If they do, state the constant rate of change. Remember that your constant rate of change must contain words. .

1.

Minutes	0	5	10	15
Water Left in Pool (liters)	250	225	200	175

3.

Time (s)	Distance (m)
1	24
2	37
3	52
4	61

2.

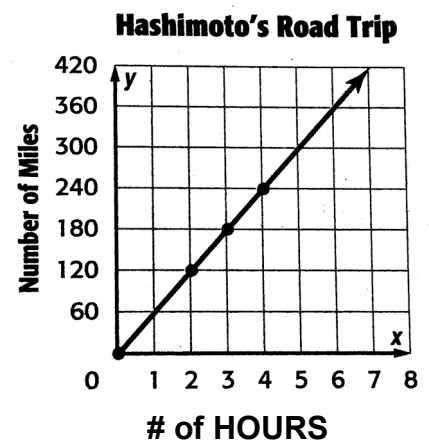
Time (h)	0	1	2	3
Wages (\$)	0	9	18	27

4.

Weeks	Weight (lbs)
2	150
4	142
6	135
8	127

5. The Guzman and Hashimoto families each took a 4-hour road trip. The distances traveled by each family are show in the table and the graph below. Which family averaged fewer miles per hours? EXPLAIN how you know.

Guzman's Road Trip	
Time (hours)	Distance (miles)
2	90
3	135
4	180



6. Make a table where the constant rate of change is 6 inches every second.

Seconds ( $x$ )	0					
Inches ( $y$ )	0					

7. The constant rate of change for the relationship shown in the table is \$8 per hour. Find the missing values.

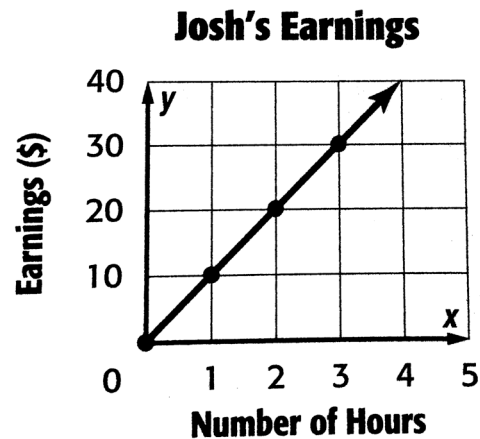
$y = \underline{\hspace{2cm}}$   $z = \underline{\hspace{2cm}}$

Time (h)	0	1	2
Earnings (\$)	5	$y$	$z$

8. The cost of 1 movie ticket is \$7.50. The cost of 2 movie tickets is \$15. Based on this constant rate of change, what is cost of 4 movie tickets? (Show your work).

9. Ramona and Josh earn money by babysitting. The amounts earned for one evening are shown in the table and graph below. Who charged more per hour? EXPLAIN how you know.

Ramona's Earnings	
Time (hours)	Earnings (\$)
2	18
3	27
4	36



Explanation: